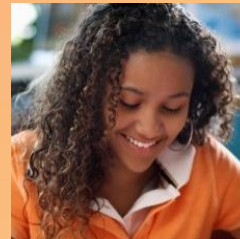


Everett Public Schools

A story of growth, change,
continuous improvement

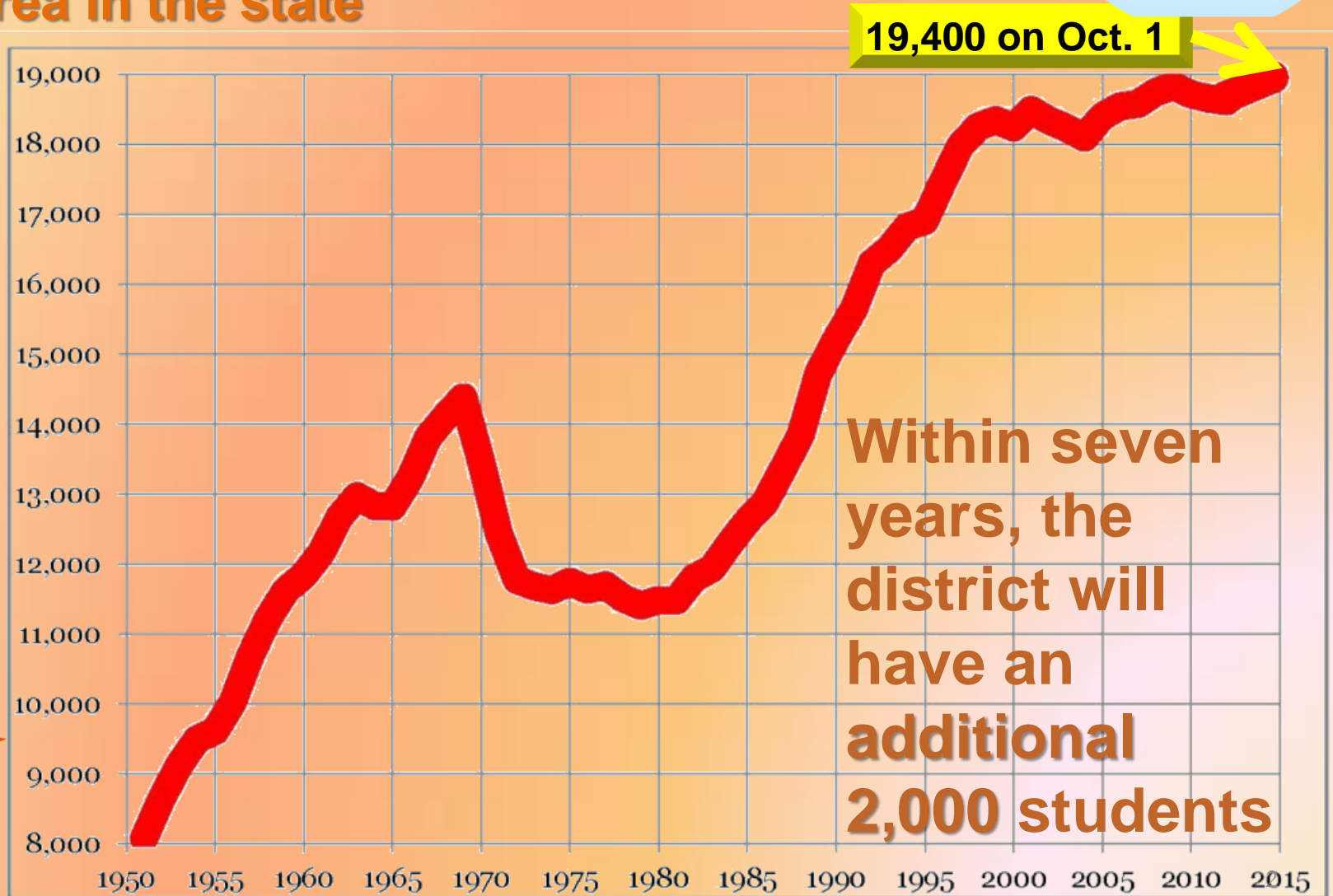
And what's on the horizon

We are Everett
Public Schools.
Thanks for helping
us prepare for our
futures.



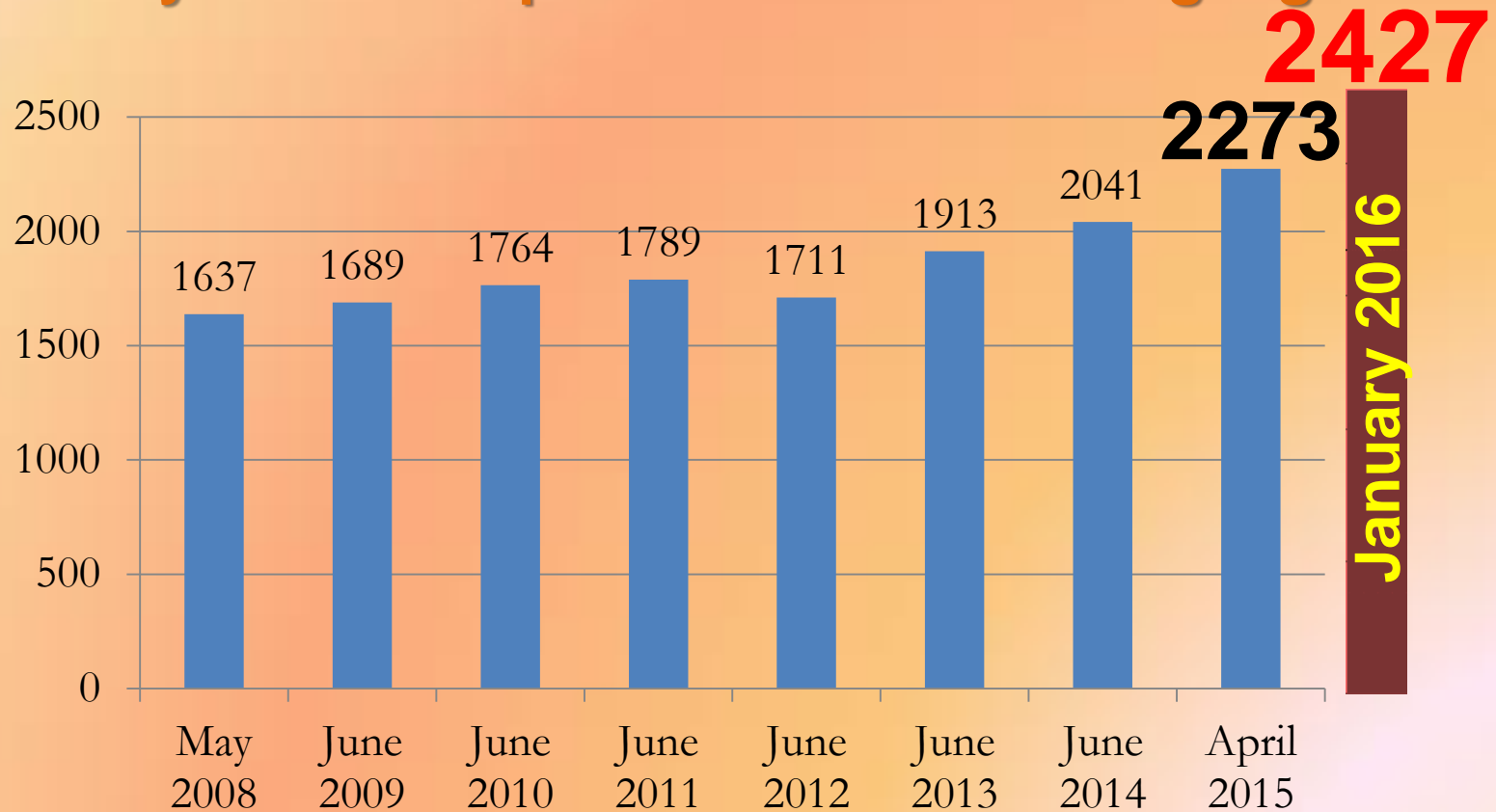
Growing

Snohomish County is the fastest growing area in the state



Growing & changing

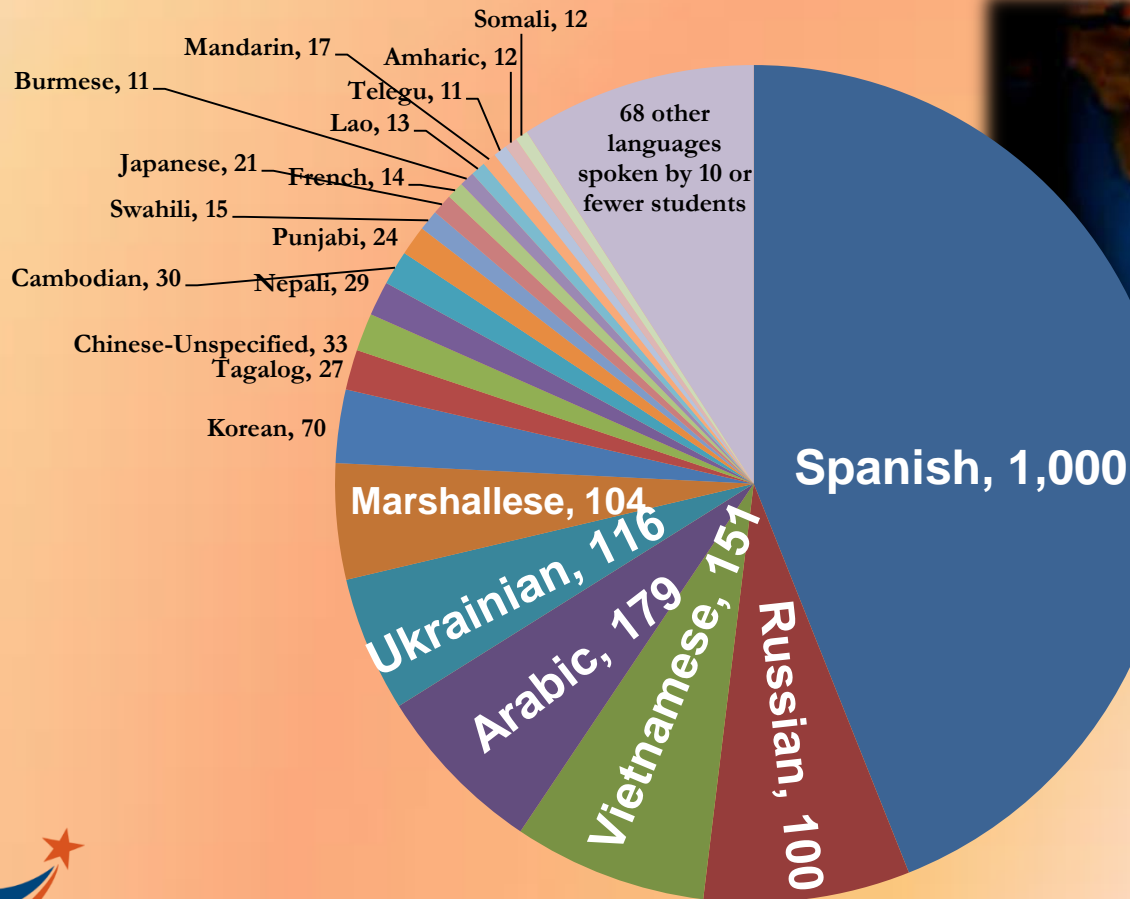
More students speak languages other than English
Today students speak more than 80 languages



Growing & changing

On Oct. 1, 2015

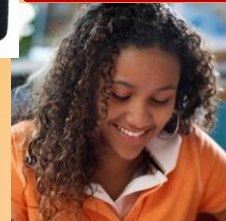
Students spoke 89 different languages



Growing & changing

District poverty rate is 40.4%

Four out of 10
of our students
live in poverty



Growing & changing

Kids In Transition

Numbers growing each month

2014

Sept. 385

Oct. 457

Nov. 530

2015

Sept. 527

Oct. 536

Nov. 606

Dec. 27, 2015
news story –
homeless family
struggles in our
region.



► NORTHWEST

Families in search of secure housing face 'vicious cycle'



Continuous improvement

4 and 5 year graduation rate increases

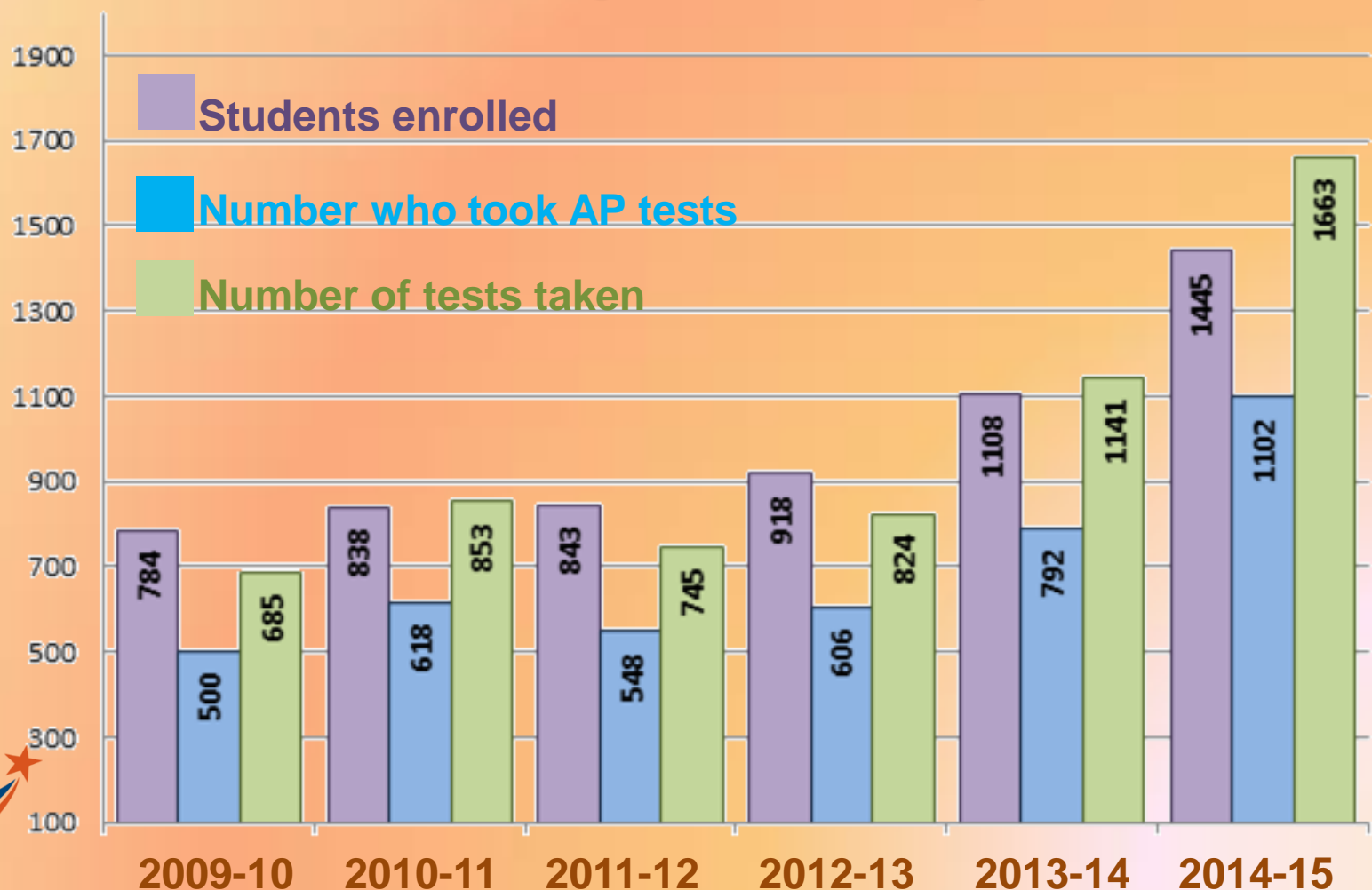


	2014 data	2015 data
4-year	89.3%	90.2%
5-year	91.2%	94.5%



Continuous improvement

More students taking challenging classes
Advanced Placement growth over 5 years



Continuous improvement

More students taking challenging classes

College in the High School enrollment trend

2012

Students

Classes

2,048

6,128

2015

Students

Classes

2,612

8,784



Continuous improvement

More full day kindergarten opportunities

Fall 2012

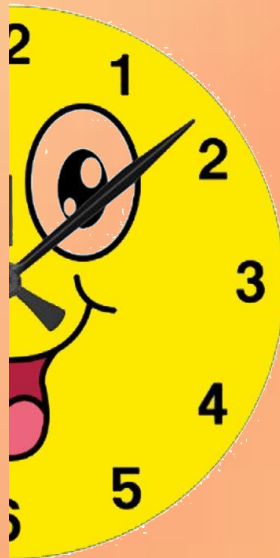
- **846** students were in **41** half day classes

This year

- **198** students are in **10** half day classes

Next year

- **0** students in **0** half day classes



Fall 2012

- **655** students attended **29** FDK classes

This year

- **1,263** students attend **57** FDK classes

Next year

- **1,425** students to be in **72** full day classes



Continuous improvement

2015 Smarter Balanced results
Everett compared to the state

	ELA	Math	Science
Grade			
3	+ 8.6	+ 5.8	
4	+ 9.7	+ 7.8	
5	+12.5	+ 8.0	
6	+14.2	+ 6.4	
7	+15.5	+ 9.6	
8	+15.3	+10.2	+12.9
10	+ 0.5		+ 5.1
11	+18.0	+18.0	
12	+11.3	+ 8.6	

Once again,
Everett's students
outperform
the rest of the
state!



Continuous improvement

Schools earn achievement awards

View Ridge Elementary
Mill Creek Elementary
Cedar Wood Elementary
Eisenhower Middle School
Henry M. Jackson High School
Garfield Elementary

Congratulations
to the district's
**2014 Washington
State Schools of
Achievement.**

And to Garfield as
**2015 School of
Distinction**

Since 2005, district schools
have been honored with these
and other state and national
awards **84** times!



On the horizon

Some highlights for 2016 and beyond

- AP Capstone at each high school in 2016
- Continued refinement of senior project – project includes *Financial Literacy*
- Second annual Summer Reading Challenge in 2016
- New Executive Director of STEM, Partnerships and Legislative Affairs
- Everett High and Evergreen Middle are *Microsoft Showcase Schools*
- *Naviance* available to all parents & students, grade 6 through 12



On the horizon

For 2016 and beyond

1. Replacement Safety, Building, and Instructional Technology Improvements Levy
2. Capital Bond

Who has been involved?

Why?

What's being considered?

What might this cost?

What's the timeline?



On the horizon

Bond & Capital Levy

Who has been working on this?

For how long?

Since spring 2014

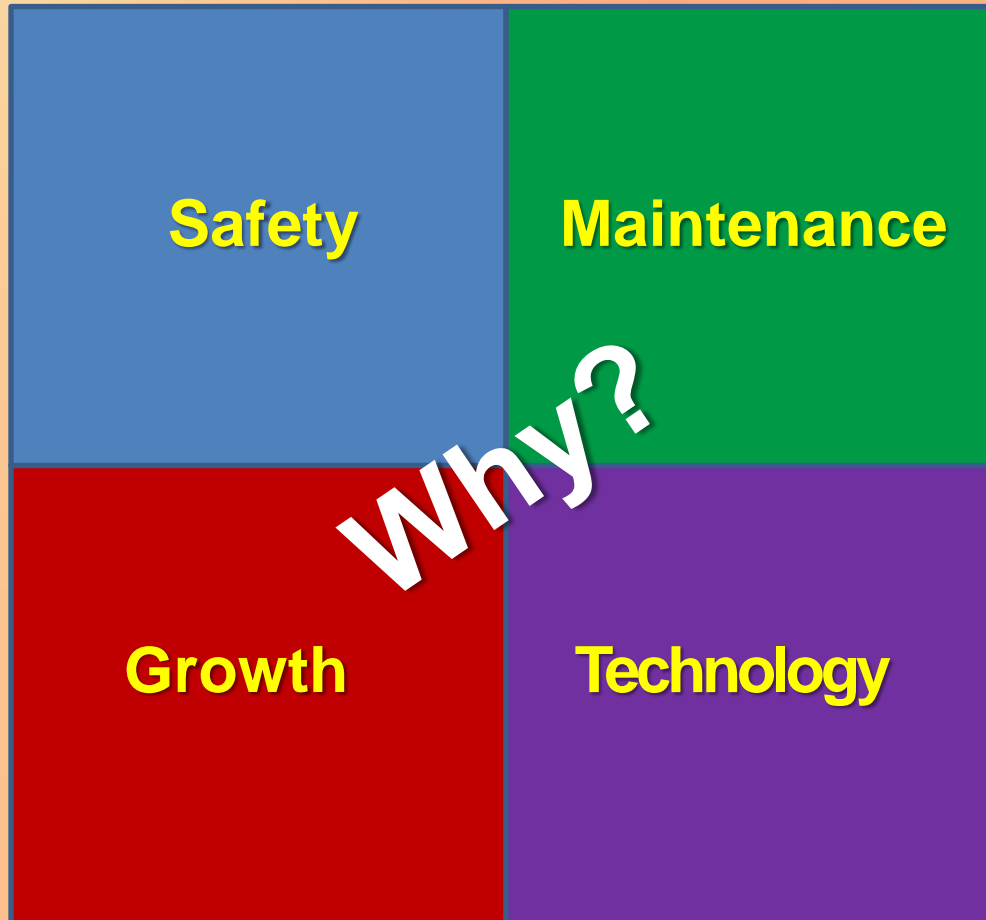
- 14 public board meetings, study sessions, *Fishbowls*
- Board tours of Microsoft and Microsoft Demonstration School
- 2 *Thoughtexchange* online community perception engagements
- Capital Facilities Advisory Council
- Facilities Advisory Council
- Technology Advisory Council
- Presidents' Advisory Council
- PTSA Council
- Snohomish Economic Alliance



On the horizon

Bond & Capital Levy

What's the timeline?



January 26

Potential board decision

April 28 potential
election date

If approved in
April 2016,
bond funds would be
available as projects
launch

Capital Levy funds would
be available over 6 years,
beginning spring 2017

On the horizon

Bond & Capital Levy

Why?

Safety

- Monitor and control who enters and leaves schools
- Newer and remodeled schools have glassed-in double entries



On the horizon

Bond & Capital Levy

Why?

Maintenance

Basic maintenance now is less expensive than major repair projects later

- Roofs
- Carpeting
- HVAC (Heating, ventilation, air conditioning)
- Painting
- Upgraded fire alarms
- New access ramps



On the horizon

Bond & Capital Levy

Why?



Growth

Today, more than 19,000 students

- Within the next 7 years, projections show there will be **2,000** more students

Bond and levy projects provide more classroom space for more students and relieve overcrowding



On the horizon

Bond & Capital Levy Why?

Technology



Giving EACH student equitable access to educational technology

- Higher education and career expectations include “knowing” how to use tools and internet resources
- To succeed in their futures, students need access and tools today

On the horizon

Bond & Capital Levy

What might this cost?

Bond

\$149,700,000

District pays this back to investors over 15-20 years

(Compared to 2014 bond request of \$259,400,000)

Requires 60% supermajority approval

Capital Levy

\$89,624,000

These funds are available for district use in 12 different installments over 6 years

This is a REPLACEMENT of 2010 approved Capital Levy

Requires 50% +1 simple majority approval



On the horizon

Bond & Capital Levy

What might this cost?

In 2013

The total local school tax rate paid by district residents was **\$6.55** per each \$1,000 of property value

Or, for a home valued at \$300,000 in 2013, an owner paid \$1,965 to support local schools

In 2017

If BOTH bond and levy were approved, the **PROJECTED** local school tax rate would be **\$5.86** per each \$1,000

Or, in 2017 for a home valued at \$300,000, an owner would pay \$1,758 to support local schools

Home values have **INCREASED** since 2013. A \$300,000 home in 2013 will likely be worth more. Total local school tax will vary from home to home.

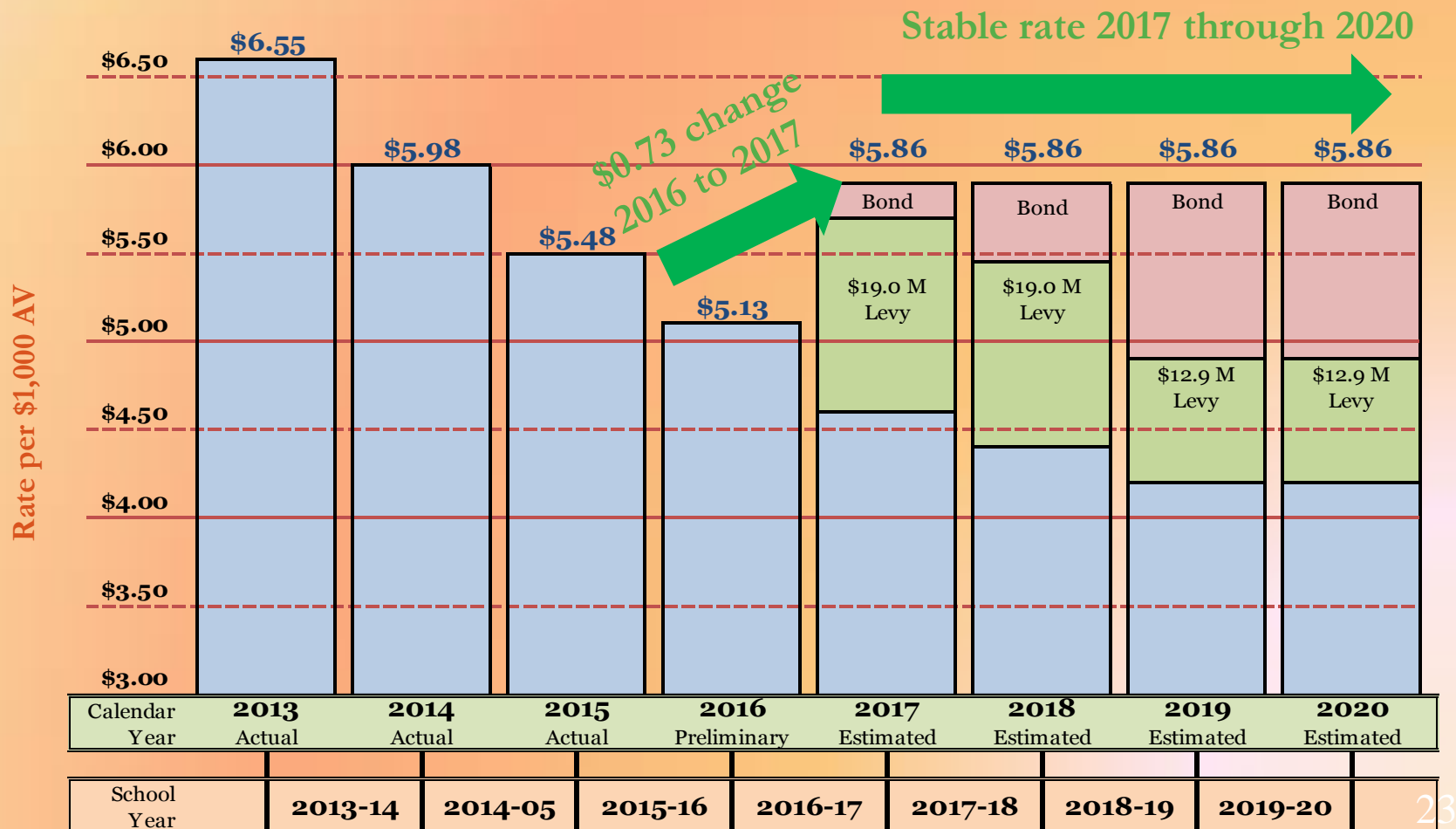


On the horizon

Bond & Capital Levy

What might this cost?

\$89.6 million Replacement Capital Levy & \$149.7 million Capital Bond



On the horizon

Legislative priorities

1. Fully fund schools
2. Eliminate “levy cliff”
3. Enact 50%+1 requirement – the democratic standard – for school bond measures



The graphic is a tilted rectangular document titled "Everett Public Schools 2016 Legislative Platform". It features the school district's logo at the top left, which includes a stylized figure holding a star. The document is organized into several sections with blue and orange headers. A central photograph shows three young students of diverse backgrounds sitting at a desk and working on a project. The "Our Mission" section is written in a script font. The "Board of Directors" and "Superintendent" sections list names and titles. The "Core Values" section lists six principles. The "Everett Public Schools 2016 Legislative Priorities" section is highlighted in orange and lists three main priorities, each with a list of specific actions. The priorities are: 1. Fulfill the State's paramount duty to fully fund K-12 education, 2. Safeguard school districts from the 2018 levy cliff, and 3. School construction and simple majority for bonds.

EVERETT PUBLIC SCHOOLS

Our students will lead and shape the future.

Our Mission
Inspire, educate, and prepare each student to achieve to high standards, contribute to our community, and thrive in a global society.

Board of Directors

- Pam LeSense, President
- Ted Wenta, Vice President
- Traci Mitchell, Legislative Representative
- Carol Andrews, Board Member
- Caroline Mason, Board Member

Superintendent

- Dr. Gary Cohn

Core Values

- Learning
- Equity
- Passion
- Respect
- Diversity
- Collaboration

Everett Public Schools 2016 Legislative Priorities

Fulfill the State's paramount duty – amply fund K-12 education

- Implement the new basic education finance system the State has already adopted (ESHB 2261 (2009) and SHB 2776 (2010)).
- Identify a framework for basic education to ensure the State fully funds basic education, particularly in the areas of salaries and benefits. What qualifies as basic education must ensure all students can graduate with 24 credits. The system must also account for the uniqueness of each employee group's work year and work day.
- Target a statewide graduation rate of 100 percent and provide full funding for the program of basic education.

Safeguard school districts from falling off the 2018 levy cliff

- Take action during the 2016 legislative session to prevent the levy cliff. Without such action, in 2017, school boards across the state must publicly adopt a reduced educational program (REP) and launch a reduction in force (RIF). Unless the Legislature takes action in the 2016 short session, districts must adopt the REP in 2017 even if the 2017 105-day biennial session ends on time.
- Take responsibility first for basic education costs – before cutting local levy authority or cutting Local Effort Assistance (LEA) for property-poor districts.

School construction and simple majority for bonds

- Send voters a constitutional amendment to change the requirement to approve school district bonds. The 60 percent super-majority requirement should be changed to a simple-majority requirement of 50 percent plus one.
- Fund school construction at a level enabling districts to build classrooms needed to lower class sizes (consistent with the 2015-17 operating budget).
- Adjust the State's funding formulas so the State pays the cost of schools needed to serve our students. The State must increase the square feet allocated to each student and increase the cost allocated per square foot. These changes are needed to ensure the State matches the actual cost of school construction.

Thank you!

We are growing, changing & continuously improving because of your support

Suggestions? Questions?

We are Everett
Public Schools.
Thanks for helping
us prepare for our
futures.

